

# GENUS EPIDEMICUS

(HOMOEOPATHIC PREVENTIVE FOR EPIDEMICS)

*Genus Epidemicus is the homoeopathic prophylaxis found to be effective for a specific epidemic.*

# Febrile Epidemic in Kerala 2007

- A febrile Epidemic outbreak, started at the end of May, 2007 continued through June, July, August and September with the peak incidence during the month of July.
- The affected districts include Trivandrum, Kollam, Pathanamthitta, Kottayam, Ernakulam, Idukki and certain areas of Malapuram and Kozhikode

# Map of Kerala showing the epidemic affected districts.



# JUSTIFICATION OF THIS STUDY

- Increasing demand from the public for the Genus Epidemicus, during the previous epidemics clearly proves the protection offered by it.
- Hence population based studies for evaluating the effectiveness of a Genus Epidemicus is justified.

# OBJECTIVES

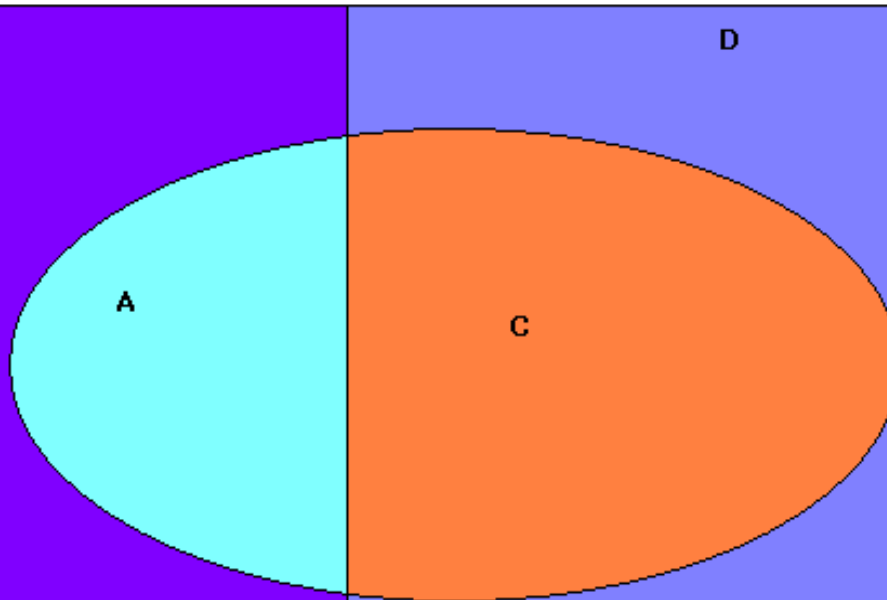
- To find out the **protection rate and protective effect** of “genus epidemicus.”
- To arrive at **recommendations** for better use of the “genus epidemicus” for future interventions.

# METHODOLOGY

- **Survey area** - A door to door survey conducted in all the households in 8 selected wards (one ward from each affected districts of Kerala) on the 17th and 18th of December 2007.
- **Case definition** - Persons having an acute febrile illness during the time of the epidemic.
- **Survey design**- Total Enumeration of the households of all the selected wards using a structured questionnaire.
- **Data collection** - Data was collected by the graduate students from 5 Homoeopathic Medical Colleges in Kerala who have been trained for this purpose.
- **Data Entry** - Data entry was done in EPI INFO 3.2.2 by the P G students of Govt. Homoeopathic Medical College Thiruvananthapuram

# ANALYSIS

The data analysis was done using the Softwares EPI INFO 3.2.2, SPSS, MS Access, MS Excel.



Total population of the survey ward	= A+B+C+D
Number of people who have taken the HGE	= A+B
Number of people who have not taken the HGE	= C+D
People who were affected by the Epidemic Fever	= A+C
Number of people who were affected by the Epidemic fever among those who have taken the HGE	= A
Number of people who were affected by the Epidemic fever among those who have not taken the HGE	= C

[www.similima.com](http://www.similima.com)

**Over all Attack rate =**  

$$(A+C) / (A+B+C+D) * 100$$

**Attack rate (among those who have taken HE)**

$$= A / (A+B) * 100$$

**Protection rate =**  
**-attack rate (in those who have taken HE)**

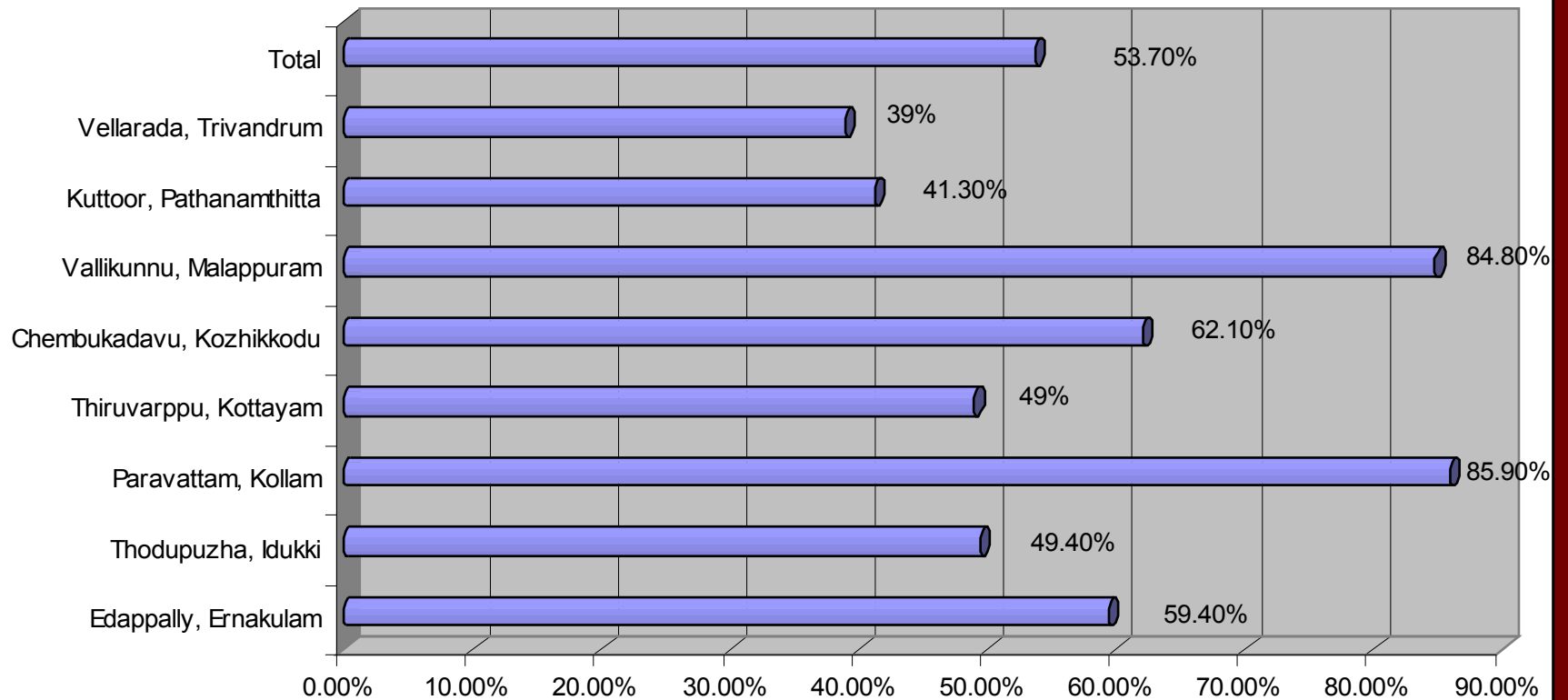
$$\text{Odds ratio} = AD/BC$$

**Protective effect = 1-**  
**Odds ratio**

# RESULTS

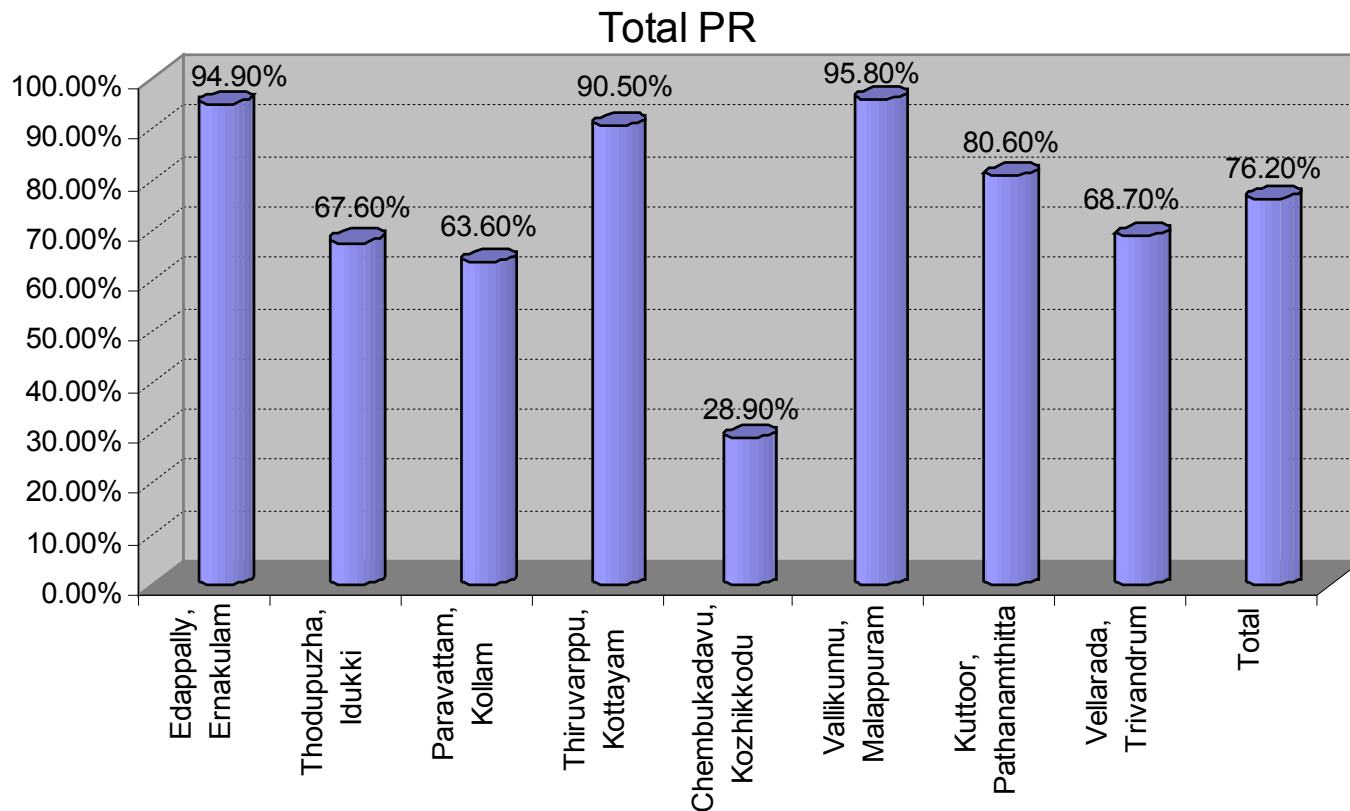
# Average intake = 58.86 %

## Intake of GE



- *Attack rate - is the percentage of people affected by the epidemic among those who have taken the GE*
- *Protection Rate - is calculated as the percentage of people not affected by the epidemic fever among those who have taken the GE*

# Protection Rate (in those who have taken HE) observed in all the 8 areas



Overall percentage of protection offered by the GE in all evaluated wards is **76.2%**

# PROTECTIVE EFFECT

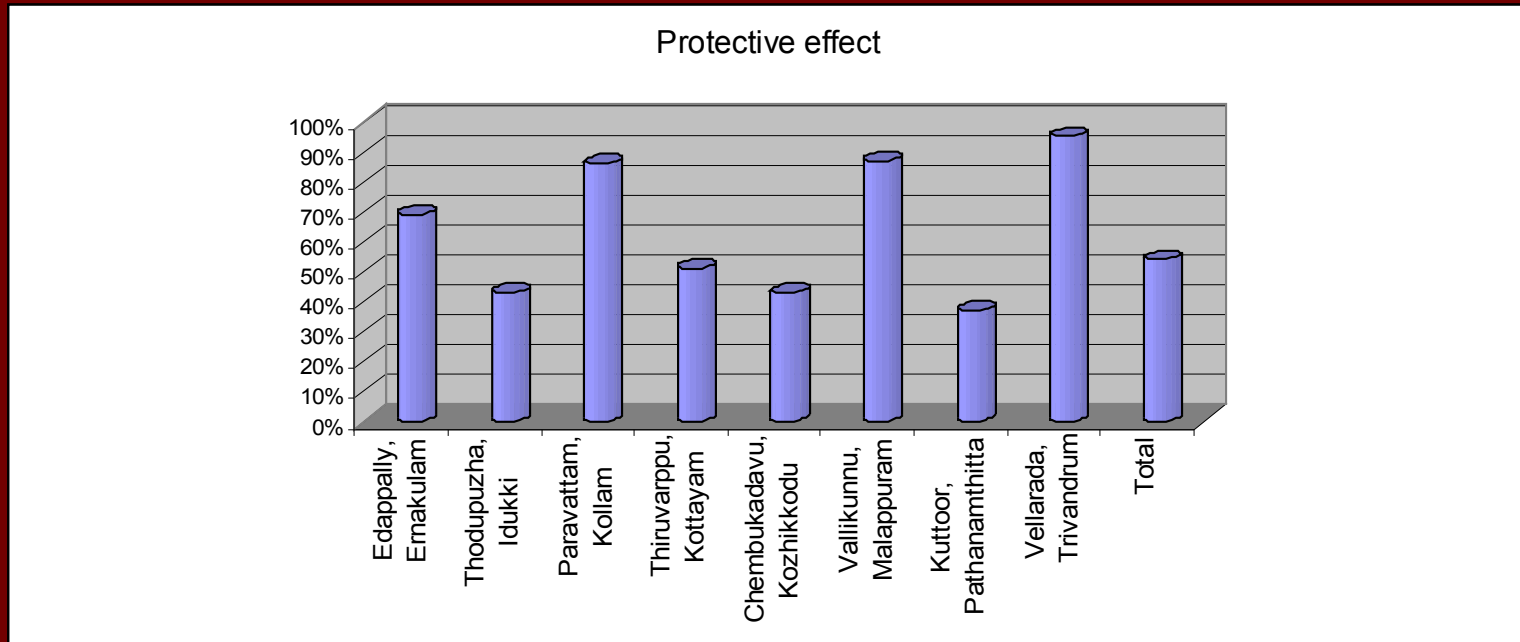
## ***Odds Ratio:***

- *To find out the efficacy of the "genus epidemicus", protective effect is calculated from the odds ratio which gives the strength of association, whether they are associated positively or negatively (protective effect), and also the statistical significance. It can be calculated from the 2 x 2 table for exposure and disease*
- *If the odds ration is less than "1", the exposure has a protective effect.*

## ***Protective Effect :***

- *is calculated as 1-Odds ratio.*

# Protective effect of the GE (in those who have taken the HGE vs those who have not taken the GE) observed in different districts



- In all the survey wards, the odds ratio is less than 1, which indicates that the exposure factor, the Genus Epidemicus has a definite protective effect.
- The average Protective Effect for all the wards is 63.88 %

- ***Average protective effect for all the wards is 63.88%***

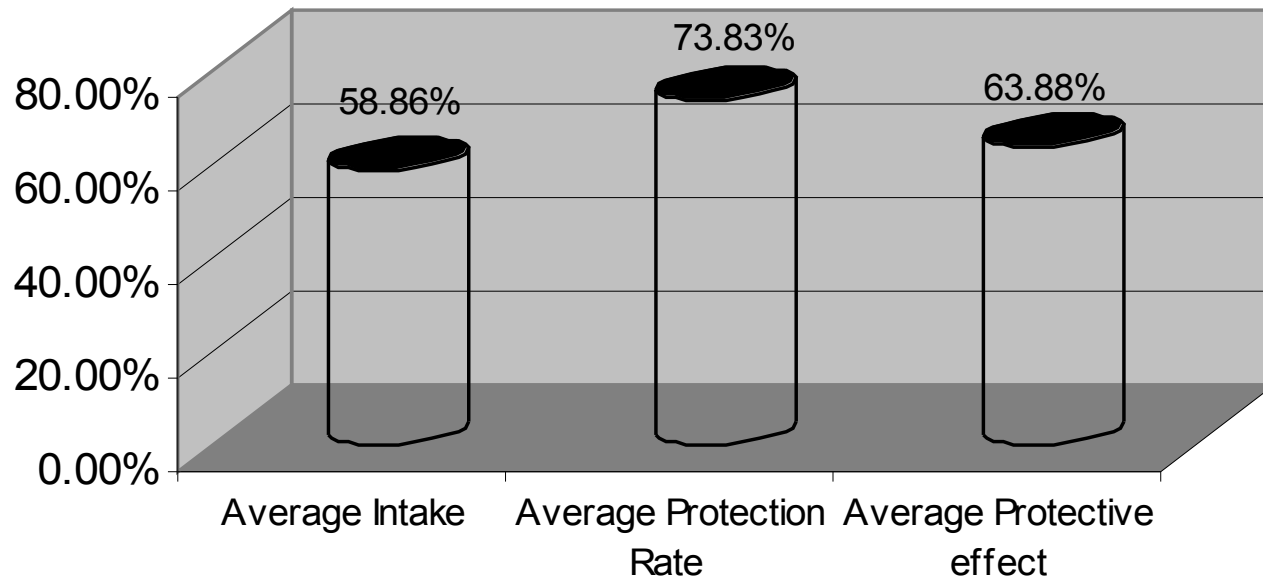
*which means that*

***the administration of "homoeopathic genus epidemicus" significantly reduces the risk of epidemic fever by 64 %.***

*Or*

- ***Those who have used "homoeopathic genus epidemicus" are 64 % less likely to develop epidemic fever than those who have not used it.***

Average Intake, Protection Rate and Protective Effect of the Homoeopathic Genus Epidemicus observed in all the survey wards



***Average intake of the GE was 58.86%***

***Average Protection Rate of the GE was 73.83%***

***Average Protective Effect of the GE was 63.88%***

**THANK YOU**